



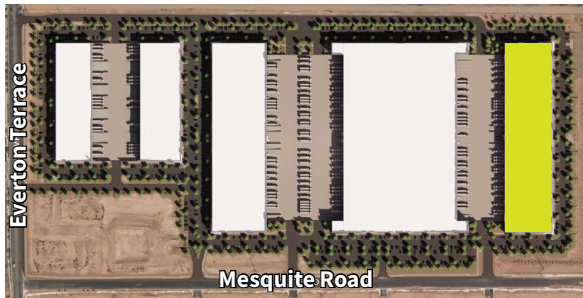
# Eastmark

CENTER OF INDUSTRY

## Building E: 10328 E. Mesquite Road

Mesa, AZ

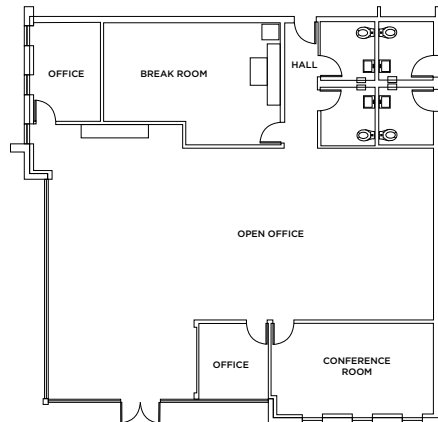
Site plan



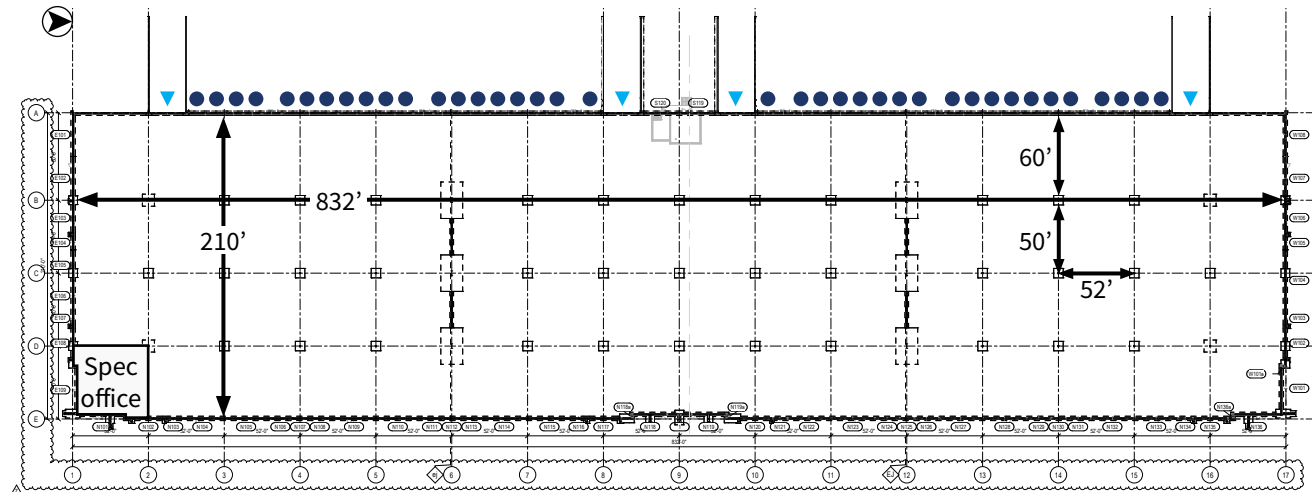
Building size:	176,048 SF
Spec office:	±3,329 SF
Clear height:	32'
Building depth:	210'
Column spacing:	52'x50' (60' speed bays)

Loading:	38 Dock doors (9'x10') 4 Grade level doors (12'x14')
Truck court depth:	210' shared with Bldg. D
Power:	3,600A 3PH, 277/480V
Parking stalls:	270
Sprinklers:	ESFR K-25

Spec office



- Dock
- ▲ Grade



**Steve Larsen, SIOR, CCIM**

Executive Managing Director  
Direct +1 602 282 6296  
steve.larsen@jll.com

**Jason Moore, SIOR, CCIM**

Executive Vice President  
Direct +1 602 282 6280  
jason.moore@jll.com

**Pat Harlan, MCR, SLCR**

Senior Managing Director  
Direct +1 602 282 6298  
pat.harlan@jll.com

