



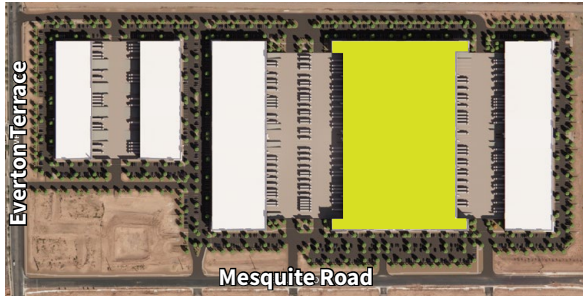
# Eastmark

CENTER OF INDUSTRY

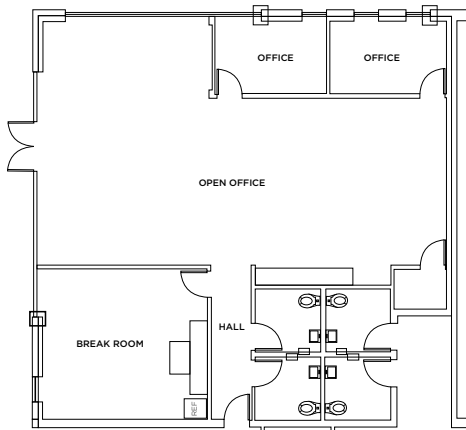
## Building D: 10236 E. Mesquite Road

Mesa, AZ

Site plan

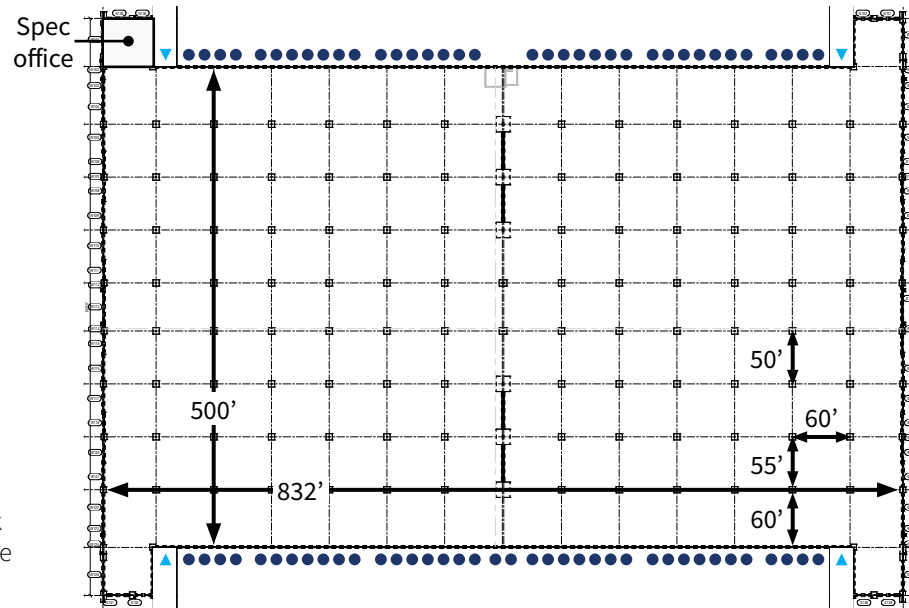


Spec office



Building size:	427,937 SF (cross dock)
Spec office:	±2,416 SF
Clear height:	36'
Building depth:	500'
Column spacing:	60'x55' & 60'x50' (60' speed bays)

Loading:	74 Dock doors (9'x10') 4 Grade level doors (12'x14')
Truck court depth:	196' (West side) 210' (East side)
Power:	3,600A 3PH, 277/480V
Parking stalls:	365
Sprinklers:	ESFR K-25



**Steve Larsen, SIOR, CCIM**

Executive Managing Director  
Direct +1 602 282 6296  
steve.larsen@jll.com

**Jason Moore, SIOR, CCIM**

Executive Vice President  
Direct +1 602 282 6280  
jason.moore@jll.com

**Pat Harlan, MCR, SLCR**

Senior Managing Director  
Direct +1 602 282 6298  
pat.harlan@jll.com

