



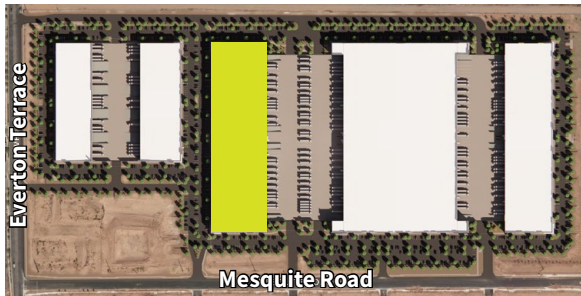
Eastmark

CENTER OF INDUSTRY

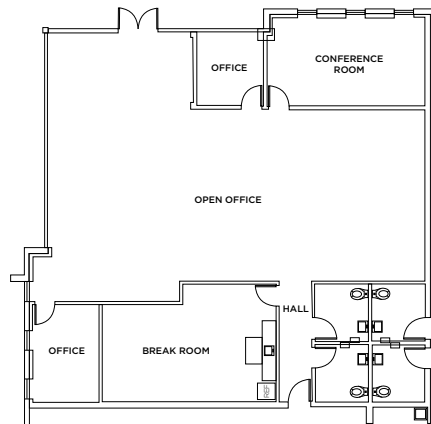
Building C: 10132 E. Mesquite Road

Mesa, AZ

Site plan

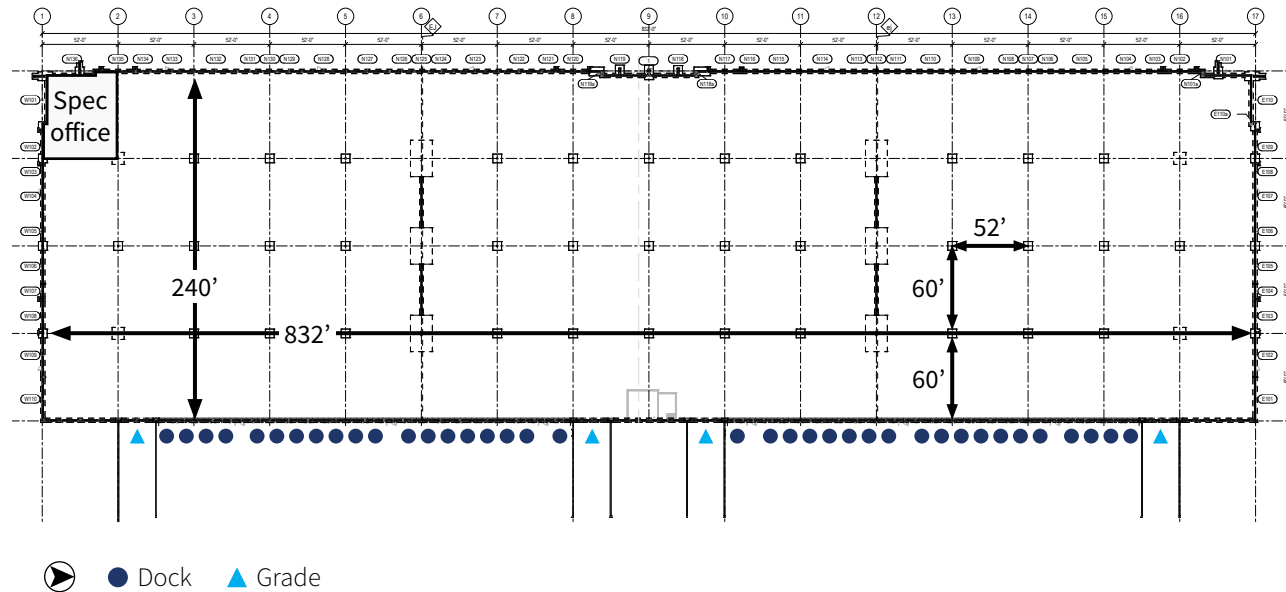


Spec office



Building size:	201,001 SF
Spec office:	±3,329 SF
Clear height:	32'
Building depth:	240'
Column spacing:	52'x60' (60' speed bays)

Loading:	38 Dock doors (9'x10') 4 Grade level doors (12'x14')
Truck court depth:	140'
Power:	3,600A 3PH, 277/480V
Parking stalls:	257
Sprinklers:	ESFR K-25



Steve Larsen, SIOR, CCIM

Executive Managing Director
Direct +1 602 282 6296
steve.larsen@jll.com

Jason Moore, SIOR, CCIM

Executive Vice President
Direct +1 602 282 6280
jason.moore@jll.com

Pat Harlan, MCR, SLCR

Senior Managing Director
Direct +1 602 282 6298
pat.harlan@jll.com

